

Figure S1 Schematic of the interfering hairpin RNA (ihpRNA) construct in modified binary vector pGOLLUM (Wroblewski, [2007](#); Wroblewski, [2014](#)).

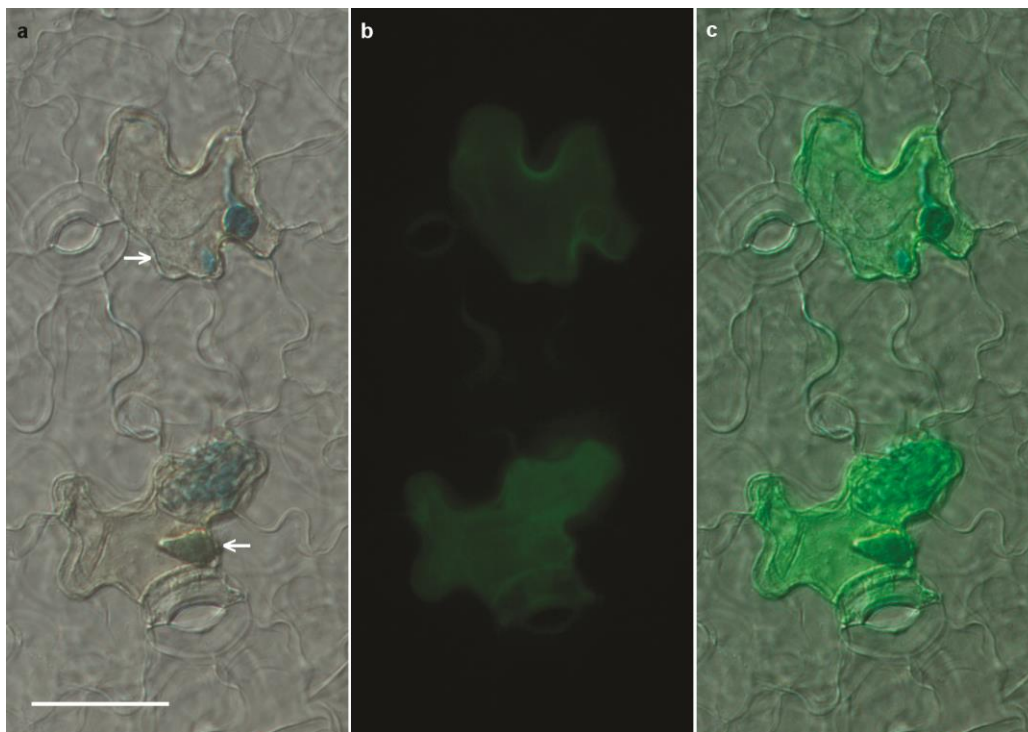


Figure S2 Microscopic Z-images of the hypersensitive resistance response in lettuce cv. Diana mediated by *Dm3*, 4 days post-inoculation with *B. lactucae*.

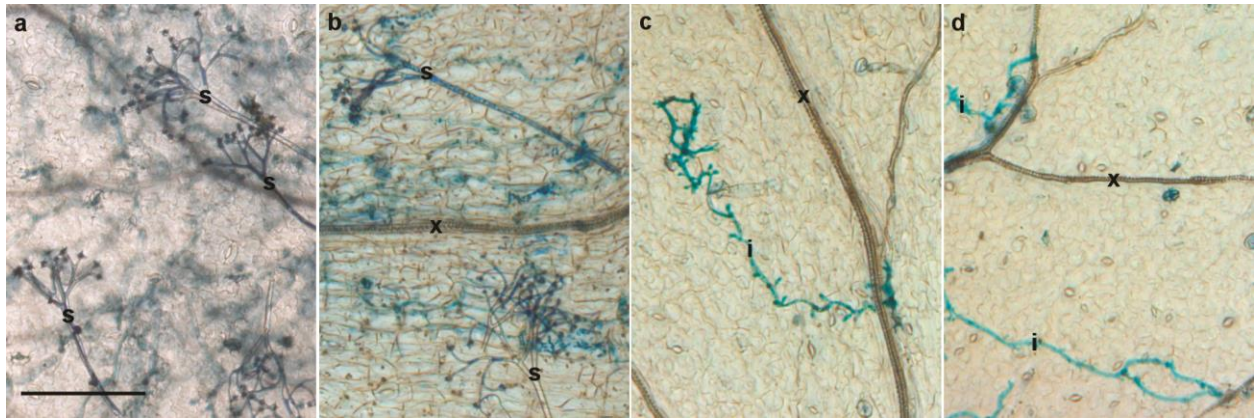


Figure S3 Z-images of differential interference contrast microscopy of trypan blue-stained *Bremia lactucae* in four lettuce genotypes 9 days postinoculation